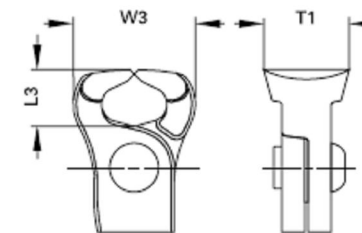
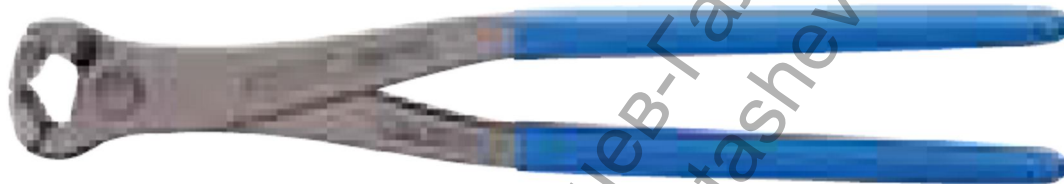


TOWER PINCER

- › Heavy-duty wire braid and mesh-cutting pincers
- › Acc. to DIN ISO 9242, Form A
- › Induction-hardened precision cutting edges, hardness 61 - 63 HRC
- › For medium-hard wire, 1.6 mm
- › Heads ground, steel-grey, with blue dipped non-slip handles (TL)
- › Geometrically optimised head and handle areas for ergonomic use
- › In high-quality tool steel



| L | L ₃ | W ₃ | T ₁ | kg | Code | No. |
|------------|----------------|----------------|----------------|-------|---------|-------------|
| 230 | 16 | 31 | 22 | 0.358 | 6752020 | 8380-225 TL |
| 250 | 16 | 35 | 25 | 0.423 | 6752100 | 8380-250 TL |
| 280 | 16 | 35 | 25 | 0.541 | 6752290 | 8380-280 TL |